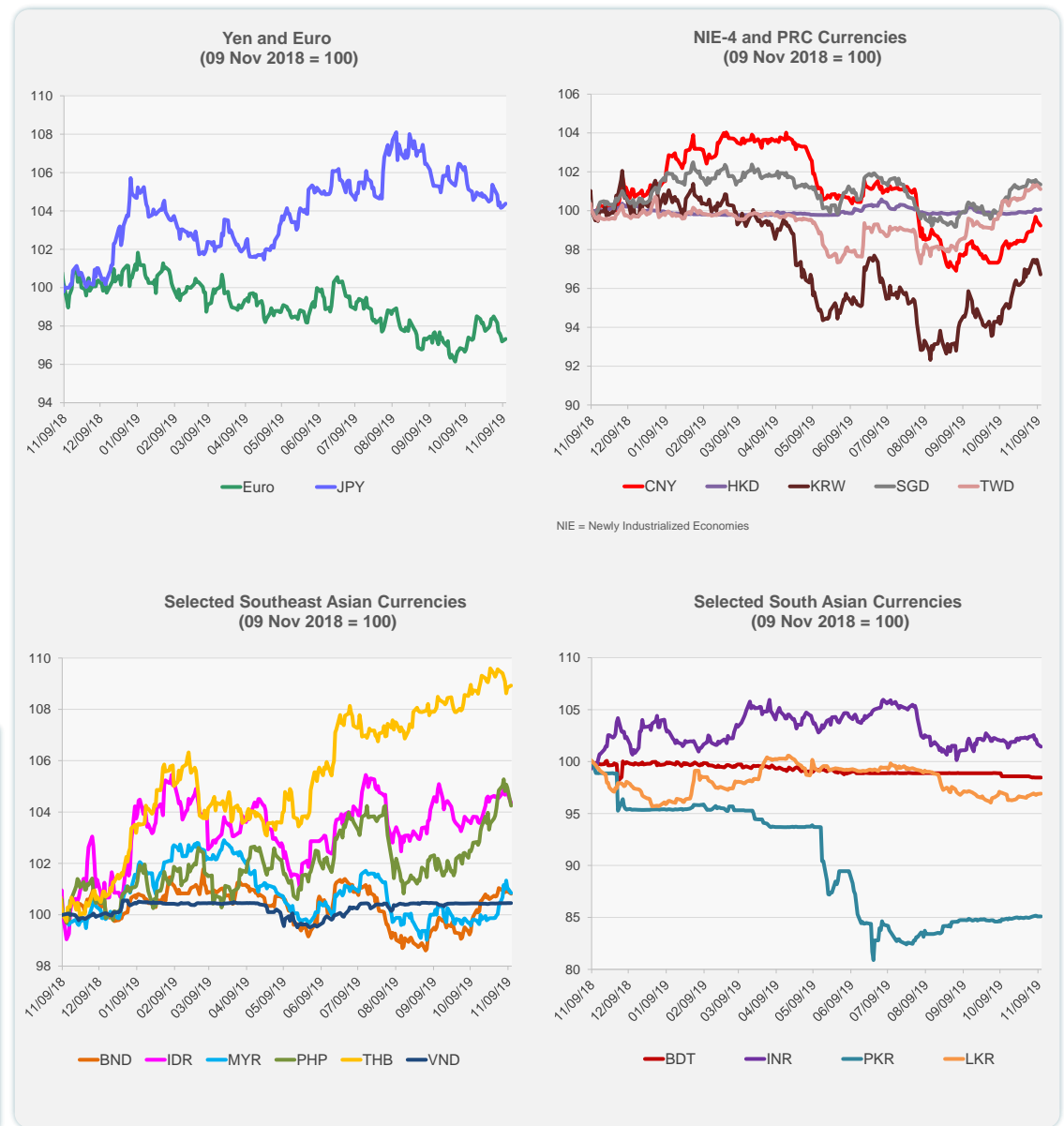
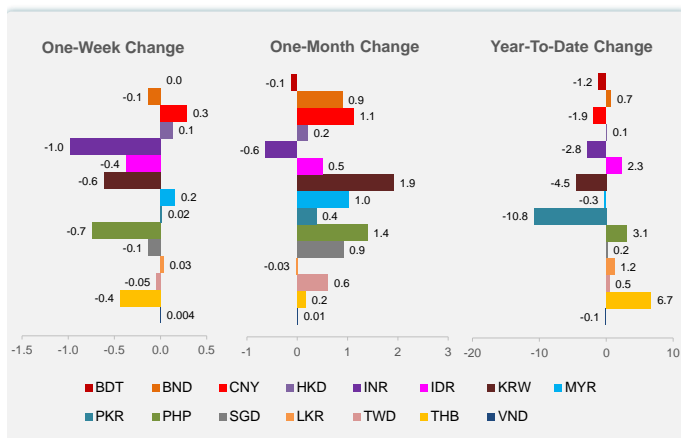


	Latest Closing	% change from Previous Day	% change from 01-Jan-19
Euro	0.91	0.14	-3.77
Japanese yen (JPY)	109.05	0.19	0.63
Bangladeshi taka (BDT)	84.88	0.00	-1.18
Brunei dollar (BND)	1.36	-0.10	0.73
Chinese yuan (CNY)	7.01	-0.25	-1.88
Hong Kong dollar (HKD)	7.83	0.04	0.06
Indian rupee (INR)	71.47	-0.25	-2.84
Indonesian rupiah (IDR)	14,067.00	-0.38	2.30
Korean won (KRW)	1,166.40	-0.78	-4.50
Malaysian ringgit (MYR)	4.14	-0.21	-0.25
Pakistan rupee (PKR)	155.69	0.00	-10.80
Philippine peso (PHP)	50.88	-0.67	3.10
Singapore dollar (SGD)	1.36	-0.13	0.18
Sri Lanka rupee (LKR)	180.67	0.03	1.21
Taipei,China NT dollar (TWD)	30.43	-0.22	0.46
Thai baht (THB)	30.35	0.07	6.72
Vietnamese dong (VND)	23,199.00	0.00	-0.10

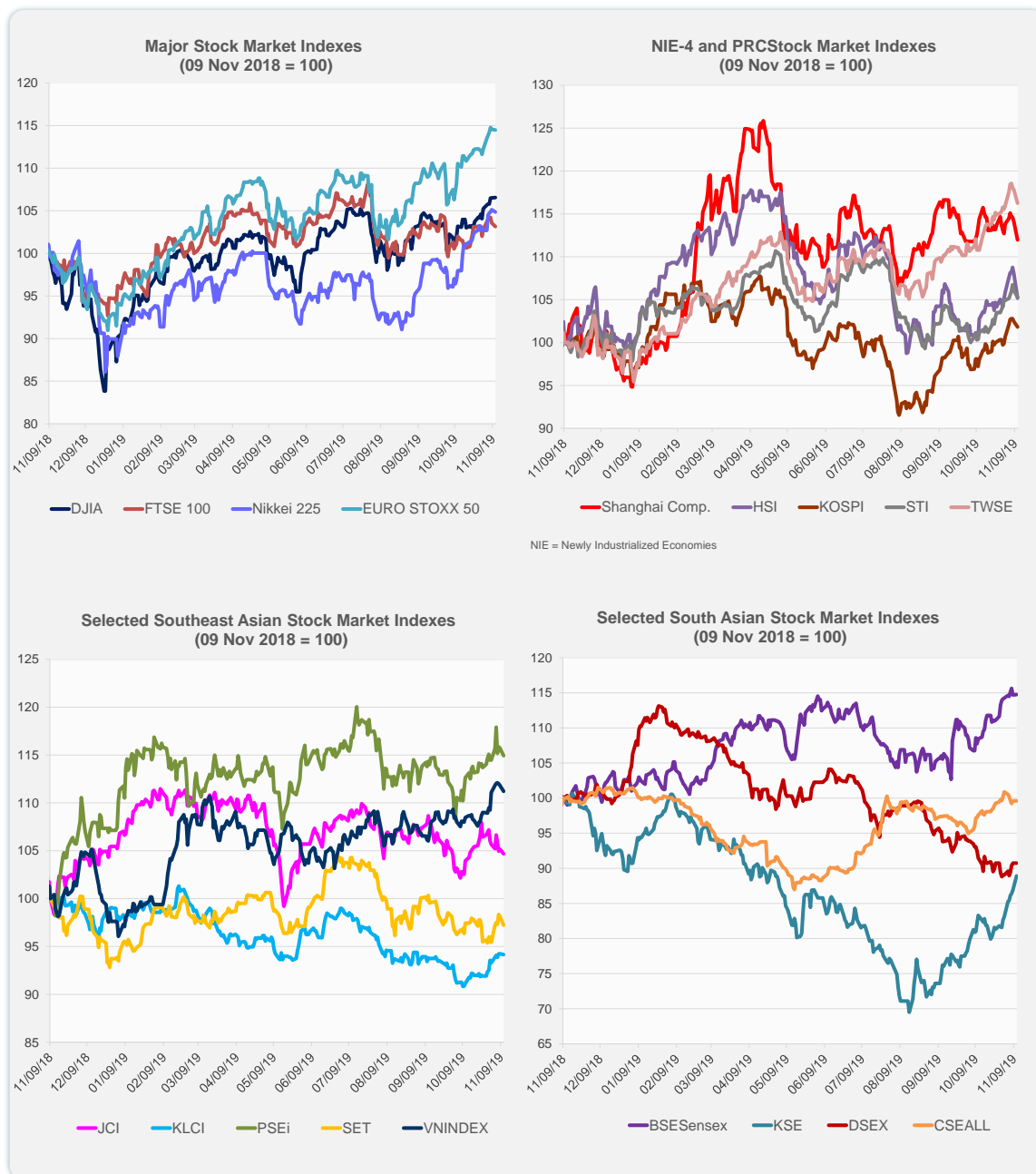
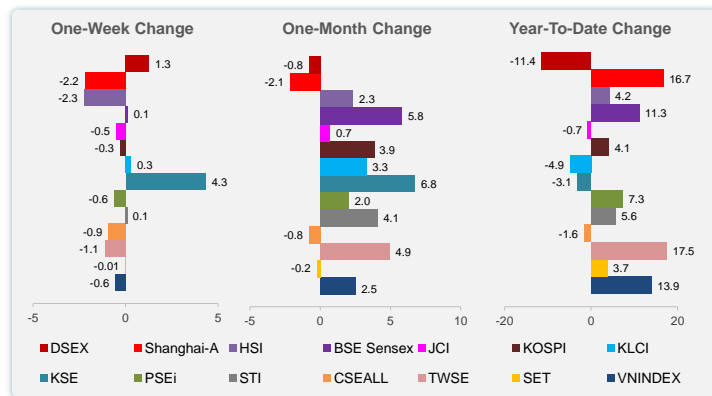


Note: Negative/Decreasing values indicate depreciation of local currency, and positive/increasing values indicate appreciation.  
Source: Bloomberg.

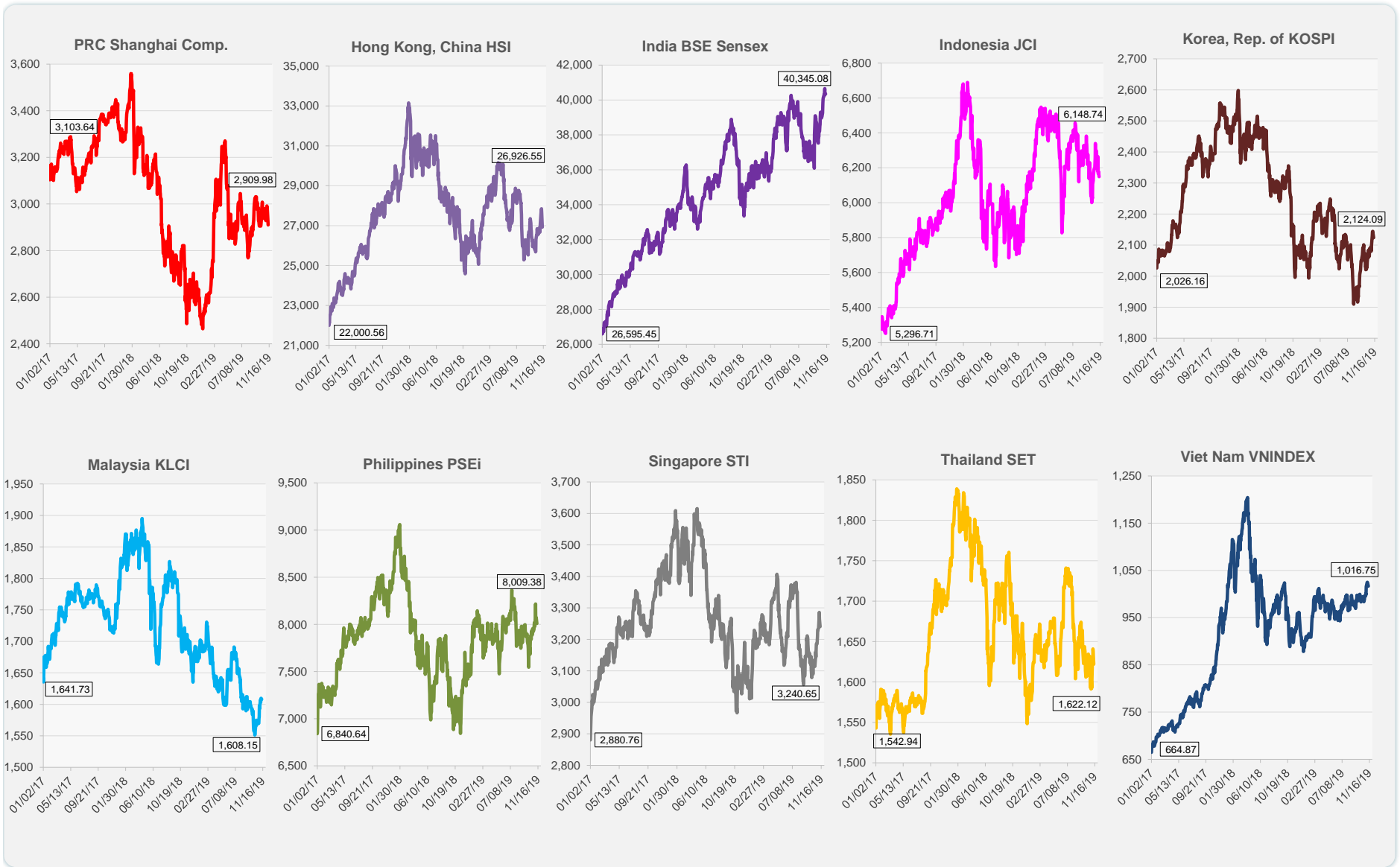


Source: Bloomberg.

	Latest Closing	% change from Previous Day	% change from 01-Jan-19
US Dow Jones Ind Avg	27,691.49	0.04	18.71
US NASDAQ	8,464.28	-0.13	27.56
US S&P 500	3,087.01	-0.20	23.14
UK FTSE 100	7,328.54	-0.42	8.92
EURO STOXX 50	3,696.82	-0.08	23.17
Japan NIKKEI 225	23,331.84	-0.26	16.57
Bangladesh DSEX	4,771.92	0.00	-11.40
PRC Shanghai Comp.	2,909.98	-1.83	16.68
Hong Kong, China HSI	26,926.55	-2.62	4.18
India BSE Sensex	40,345.08	0.05	11.28
Indonesia JCI	6,148.74	-0.47	-0.74
Korea, Rep. of KOSPI	2,124.09	-0.61	4.07
Malaysia KLCI	1,608.15	-0.10	-4.88
Pakistan KSE 100	36,803.10	2.29	-3.14
Philippines PSEi	8,009.38	-0.70	7.28
Singapore STI	3,240.65	-0.72	5.60
Sri Lanka CSEALL	5,954.62	0.00	-1.62
Taipei, China TWSE	11,427.28	-1.31	17.48
Thailand SET	1,622.12	-0.96	3.72
Viet Nam VNINDEX	1,016.75	-0.56	13.92



Source: Bloomberg.

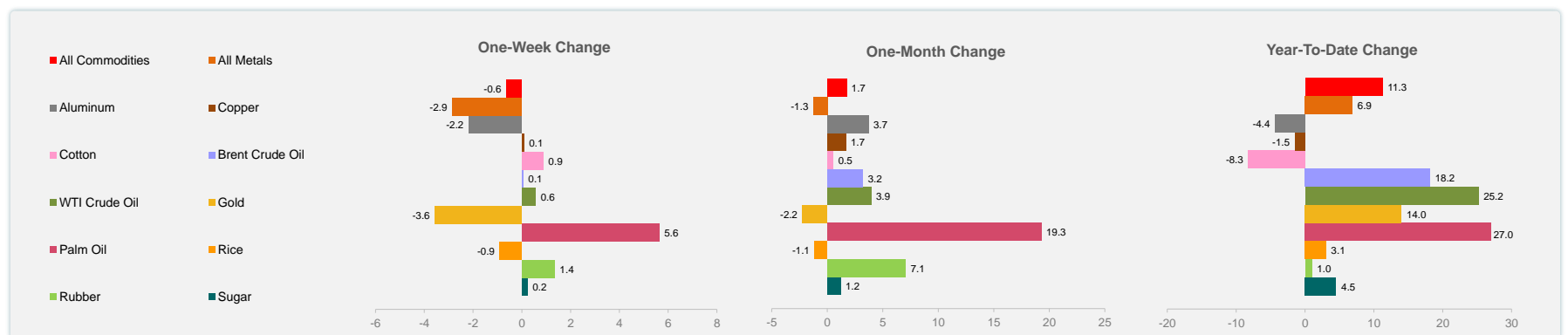
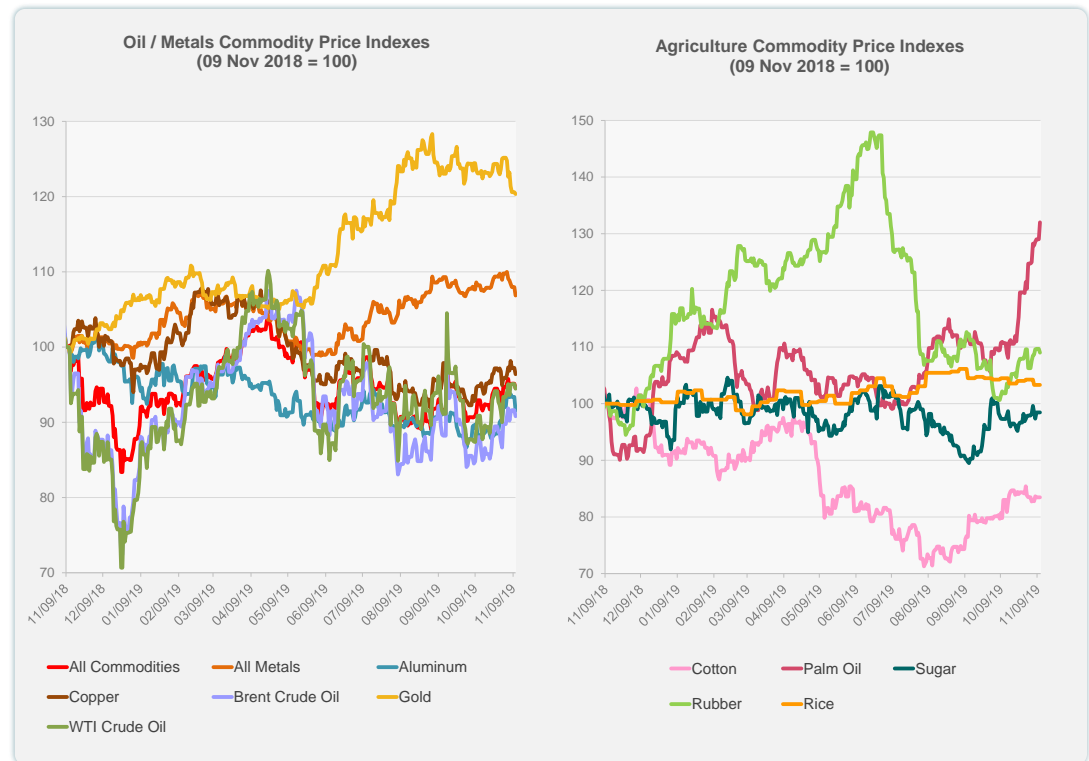


Source: Bloomberg.

	Unit	Latest Closing	% change from Previous Day	% change from 01-Jan-19
S&P All Commodities	US\$	416.52	-0.62	11.27
S&P All Metals	US\$	218.32	-1.03	6.89
Aluminum	US\$/metric ton	1,781.50	-1.97	-4.36
Copper	US\$/metric ton	5,859.25	-0.87	-1.51
Cotton	US cents/lb	63.72	0.00	-8.25
Brent Crude Oil	US\$/barrel	62.41	-0.89	18.16
WTI Crude Oil	US\$/barrel	56.86	-0.66	25.21
Gold	US\$/troy oz	1,455.90	-0.21	14.00
Palm Oil	US\$/metric tonne	600.02	2.33	27.03
Rice <sup>1</sup>	US\$/metric ton	437.00	0.00	3.07
Rubber <sup>2</sup>	US\$/kg	150.00	-0.60	1.01
Sugar	US cents/lb	12.67	0.00	4.54

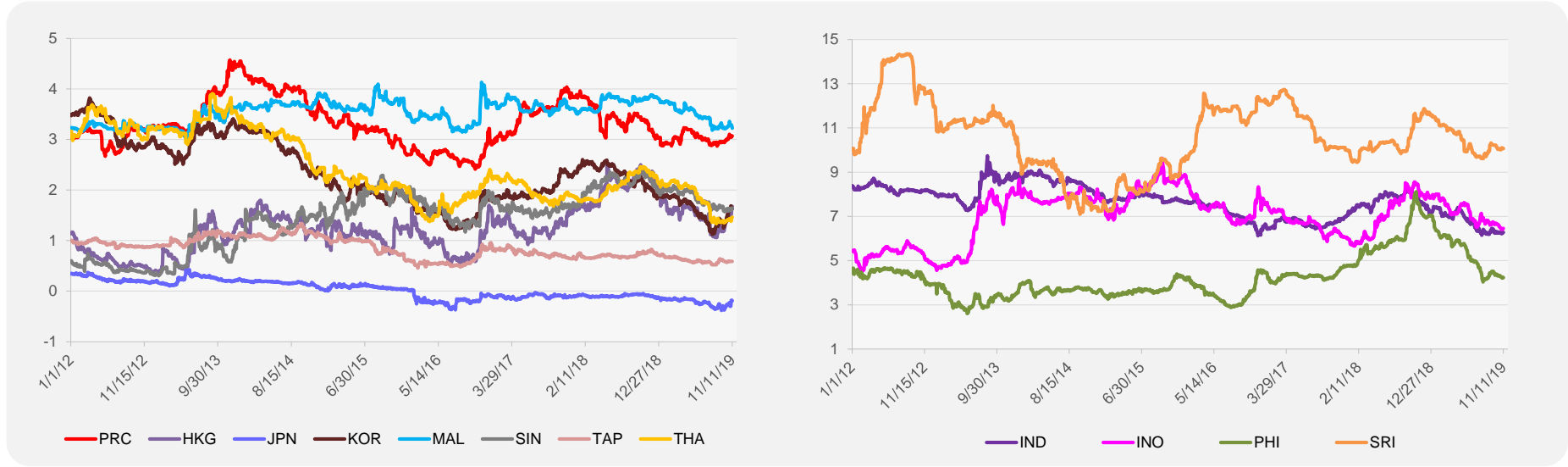
<sup>1</sup> Latest closing price from 6 November 2019.

<sup>2</sup> Singapore Exchange, Ribbed Smoked Sheet Rubber.

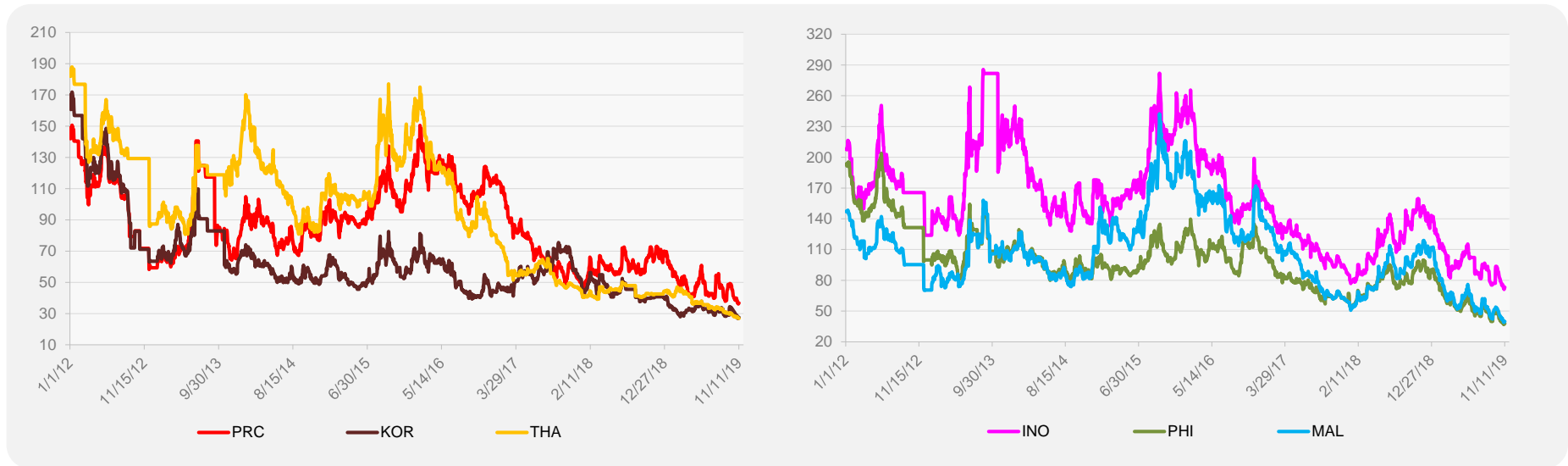


Source: Bloomberg.

### 5-YEAR LOCAL CURRENCY GOVERNMENT BOND YIELDS (%)



### 5-YEAR CREDIT DEFAULT SWAP<sup>1</sup>



<sup>1</sup> In USD and based on sovereign bonds.  
Source: Bloomberg.